

[www.auvitran.com](http://www.auvitran.com)

1. Legacy.....	3
1.1 LIMITATION OF LIABILITY .....	3
1.2 TRADEMARKS.....	3
1.3 COPYRIGHT.....	3
1.4 MORE INFORMATION.....	3
2. CobraNet Discovery .....	4
3. Select an IP Address for the Network Interface Card .....	5
4. Auto assign dynamic IP addresses to CobraNet devices.....	6
5. Auto-Save Configuration using “PERSISTENCE” mode .....	8
5.1 Introduction .....	8
5.2 Enable “Persistence” .....	8
6. Device Name and Latency Settings .....	9
7. Audio Routing and format.....	10
7.1 Transmit Bundle.....	10
7.2 Receive Bundle .....	10
8. Dynamic IP address settings .....	11
8.1 Force a dynamic IP address.....	11
Possible Warning .....	11
8.2 STATIC IP ADDRESS .....	12

# 1. Legacy

---

## 1.1 LIMITATION OF LIABILITY

In no case and in no way, the provider of this software (AuviTran, the distributor or reseller, or any other party acting as provider) shall be liable and sued to court for damage, either direct or indirect, caused to the user of the software and which would result from an improper installation or misuse of the software. "Misuse" and "improper installation" mean installation and use not corresponding to the instructions of this manual.

AuviTran is constantly working on the improvement of the products. For that purpose, the products functionalities are bound to change and be upgraded without notice. Please read carefully the User's manual as the new functionalities will be described therein.

## 1.2 TRADEMARKS

All trademarks listed in this manual are the exclusive property of their respective owners. They are respected "as is" by AuviTran. Any use of these trademarks must receive prior approval of their respective owners. For any question, please contact the trademark's owner directly.

## 1.3 COPYRIGHT

The information in this manual is protected by copyright. Therefore, reproduction, distribution of whole or part of this manual is strictly forbidden without the prior written agreement of AuviTran.

## 1.4 MORE INFORMATION

Please visit our website for any question of further inquiry concerning our product range. Updates will also be posted when available.

<http://www.auvitran.com>

## 2. CobraNet Discovery

---

CobraNet discovery is a software application from Cirrus logic, used to set-up CobraNet devices and so CobraNet parameters of the AxC-CN32io. It allows set-up of parameters:

- Dynamic IP address (warning not persistent)
- Device name
- Audio routing, format and latency
- Conductor priority
- Set-up IP static address (using SNMP)

CobraNet Discovery can be downloaded from <http://CobraNet.info/downloads/disco>

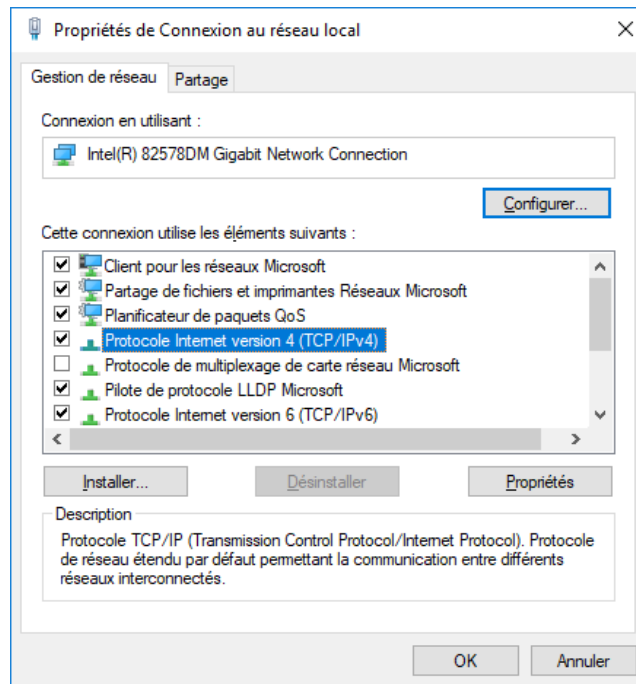
CobraNet Discovery allows user to access other parameters via SNMP remote management, a CobraNet Programmer reference is available at this address:

[http://www.CobraNet.info/sites/default/files/CobraNet\\_Programmer\\_Manual\\_PM25.pdf](http://www.CobraNet.info/sites/default/files/CobraNet_Programmer_Manual_PM25.pdf)

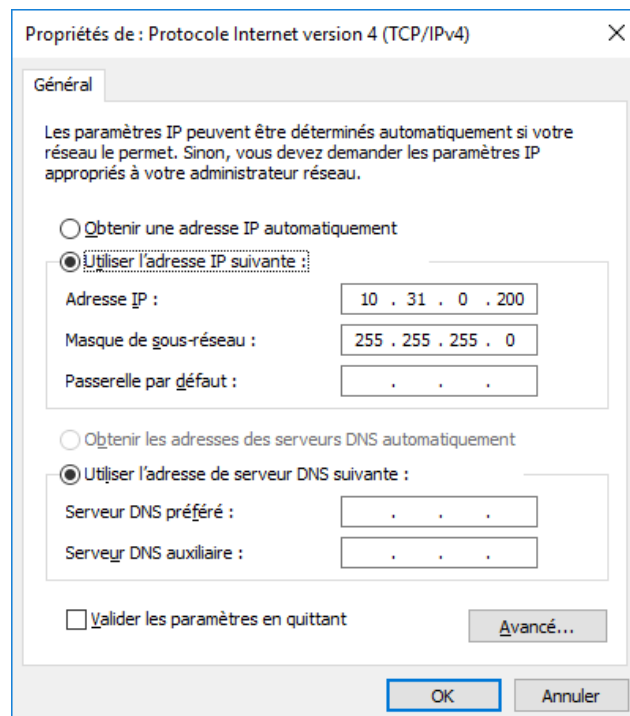
### 3. Select an IP Address for the Network Interface Card

First you need to have the good IP address on Network card

- Open Network & Internet settings
- Open dialog box on the network card used



- Select Internet protocol (TCP/IP v4) line
- Click "Properties" : following dialog box appears



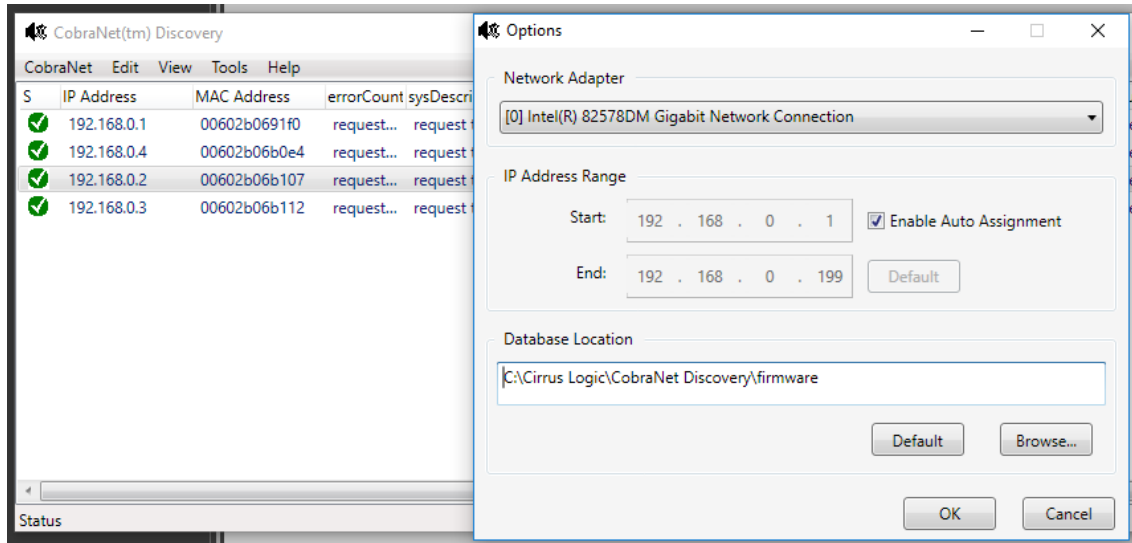
- Put IP address: 10.31.0.200 for example and sub-mask 255.255.0.0

## 4. Auto assign dynamic IP addresses to CobraNet devices

When CobraNet Discovery is used for the first time, IP range must be configured, and IP auto-assignment must be enabled, to access devices connected.

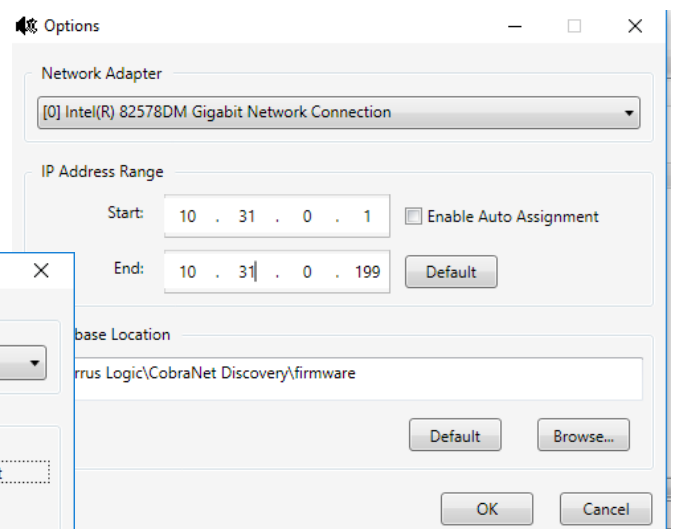
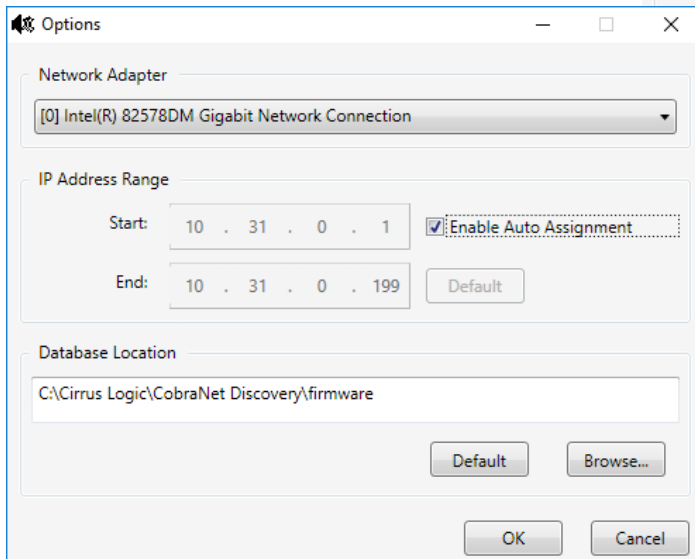
To auto assign dynamic IP address to CobraNet devices, process as described below:

- 1) Select "Tools" and "Options"



- 2) Remove the "checkmark" in "Enable Auto Assignment"

- 3) Put the correct IP address range, which must be in the same domain as computer

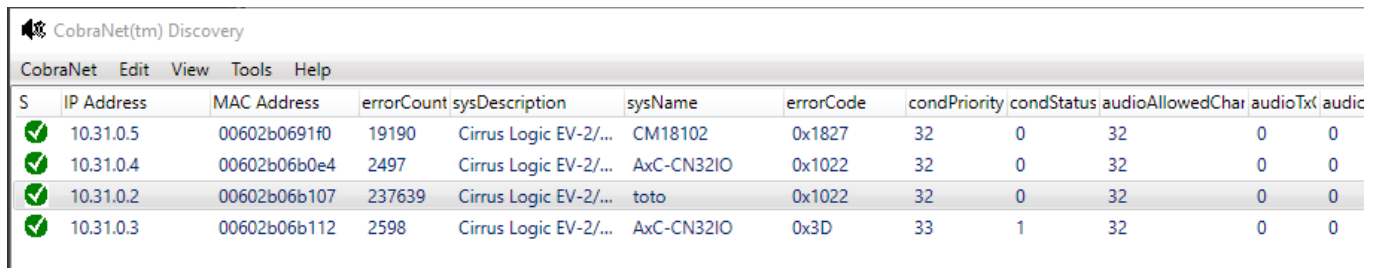


- 4) Click in "Enable Auto Assignment" to display the "checkmark"

- 5) click "OK"

- 6) Power OFF/ON devices which are in the IP address range

7) When Power ON all the CobraNet devices must have an IP address in the new range and parameters must be seen, like name



The screenshot shows the CobraNet(tm) Discovery software interface. At the top, there is a menu bar with 'CobraNet', 'Edit', 'View', 'Tools', and 'Help'. Below the menu bar is a table with the following columns: S, IP Address, MAC Address, errorCount, sysDescription, sysName, errorCode, condPriority, condStatus, audioAllowedChar, audioTx, and audioRx. The table contains four rows of data, each with a green checkmark in the 'S' column.

S	IP Address	MAC Address	errorCount	sysDescription	sysName	errorCode	condPriority	condStatus	audioAllowedChar	audioTx	audioRx
✓	10.31.0.5	00602b0691f0	19190	Cirrus Logic EV-2/...	CM18102	0x1827	32	0	32	0	0
✓	10.31.0.4	00602b06b0e4	2497	Cirrus Logic EV-2/...	AxC-CN32IO	0x1022	32	0	32	0	0
✓	10.31.0.2	00602b06b107	237639	Cirrus Logic EV-2/...	toto	0x1022	32	0	32	0	0
✓	10.31.0.3	00602b06b112	2598	Cirrus Logic EV-2/...	AxC-CN32IO	0x3D	33	1	32	0	0

8) CobraNet devices are ready to be configured properly

**Notice:**

- Dynamic IP addresses auto assigned to CobraNet devices are addresses given by CobraNet Discovery Software. These addresses can be changed manually using the CobraNet Discovery software using "New IP address" command for each CobraNet devices,
- Dynamic IP address are not "persistent" addresses and is not memorized in flash. See in next chapter how to set a "static IP address" using SNMP.

# 5. Auto-Save Configuration using “PERSISTENCE” mode

## 5.1 Introduction

Before set-up parameters, it is important to enable “auto-save parameters”, called “Persistence” in CobraNet software for each CobraNet device.

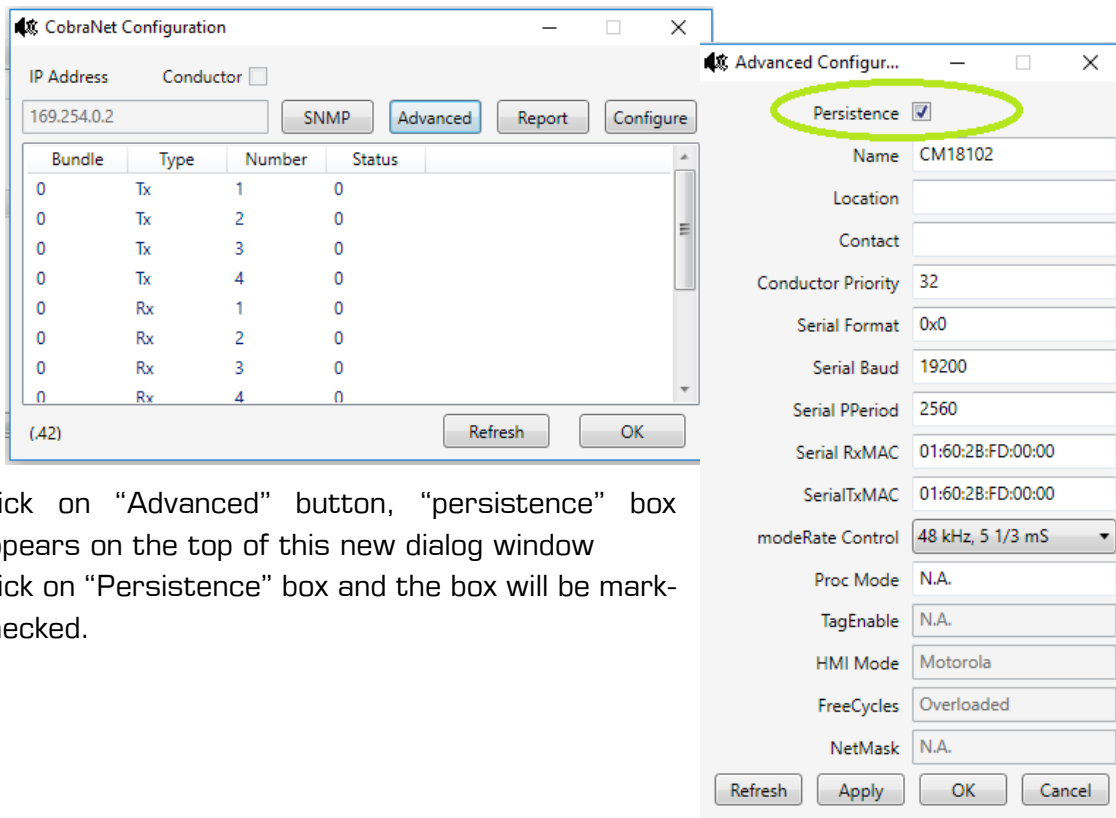
When Persistence is enabled, device name, latency, audio routing and format are saved automatically every minute.

### WARNING:

- As save is done every minute, it is important to not power off device before 1 minute after changing parameters.
- **If “Persistence” is removed, when device is power off, all the setup is lost.** At power ON default values are putting in all parameters.

## 5.2 Enable “Persistence”

- 1) To enable “Persistence” on one device, double click on the device selected.
- 2) Dialog box “CobraNet configuration” appears:



- 3) Click on “Advanced” button, “persistence” box appears on the top of this new dialog window
- 4) Click on “Persistence” box and the box will be mark-checked.

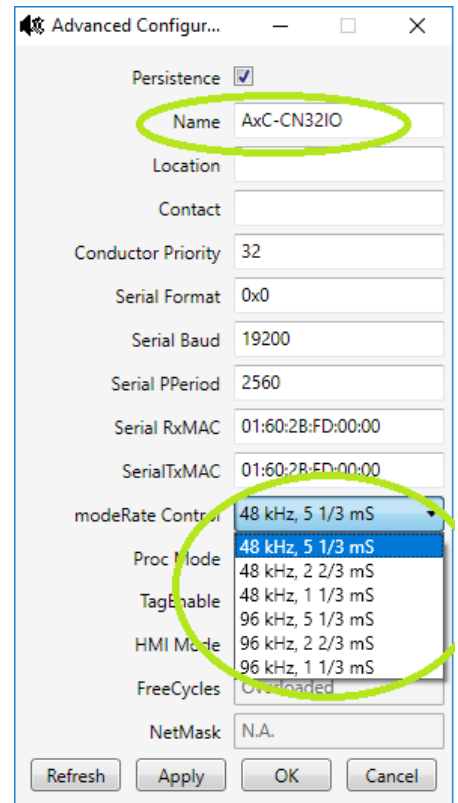


## 6. Device Name and Latency Settings

You can change the device name and the latency in the advanced window

- 1) Select device and double click on the device selected to get "CobraNet configuration" window (you can also make a right click)
- 2) After click on "advanced button"

**Warning:** latency must be setup in the same way in all CobraNet devices connected in the same network



## 7. Audio Routing and format

CobraNet device uses audio bundles to carry audios streams. Each bundle can contain a maximum of 8 streams.

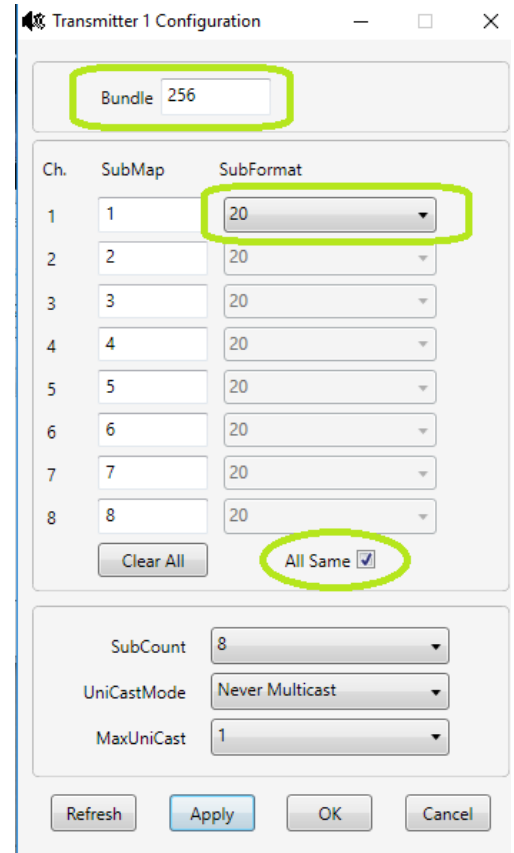
- 1) Select device and double click on the device selected to get “CobraNet configuration” window (you can also make a right click)
- 2) 4 transmit bundles (TX) and 8 receive bundles (RX) are available
- 3) Select TX or RX bundle number

### 7.1 Transmit Bundle

- 1) Click on “configure” button
- 2) In this new window, you can:
  - a. Change the bundle number
  - b. Change the bit depth (16, 20,24)
  - c. Change the number of stream
- 3) To put the same bit depth for all bundle, you must enable “All Same” box.

#### Notice:

- Bundle 0 is an unused bundle never transmitted
- Bundle1-255 are always multicast bundles, transmitted by a single CobraNet interface and received by any number of devices
- Bundle 256-65279 are unicast bundles sent to only one destination

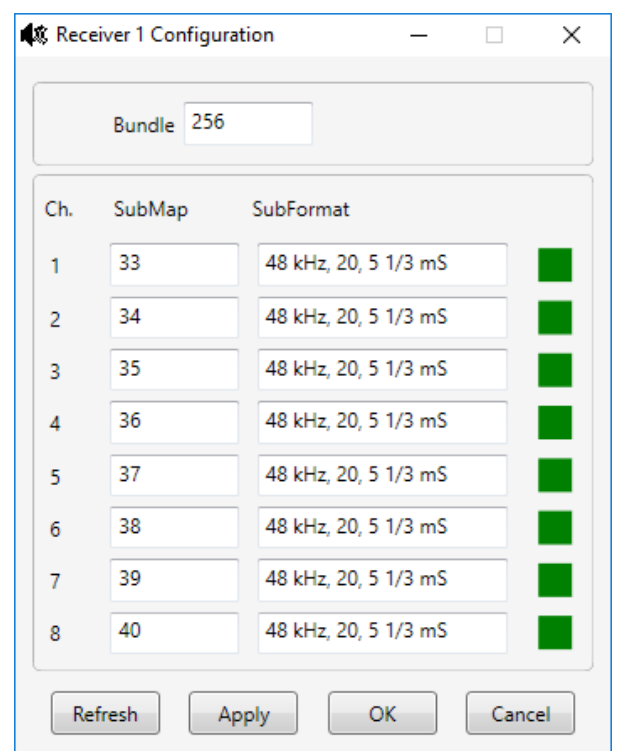


### 7.2 Receive Bundle

- 1) Select RX number
- 2) Click on “configure” button
- 3) Put the appropriate bundle number
- 4) Patch the bundle channels (Ch) to the inputs (SubMap).

#### Notice:

- Input 1 is defined as Submap 33
- If a bundle is available with this bundle number and the SubFormat (frequency, bit depth, latency) is compatible, the box on the right will be green, indicating audio is being received correctly
- If the box is red, the SubFormat is not compatible
- If the box is grey the bundle number is not available



## 8. Dynamic IP address settings

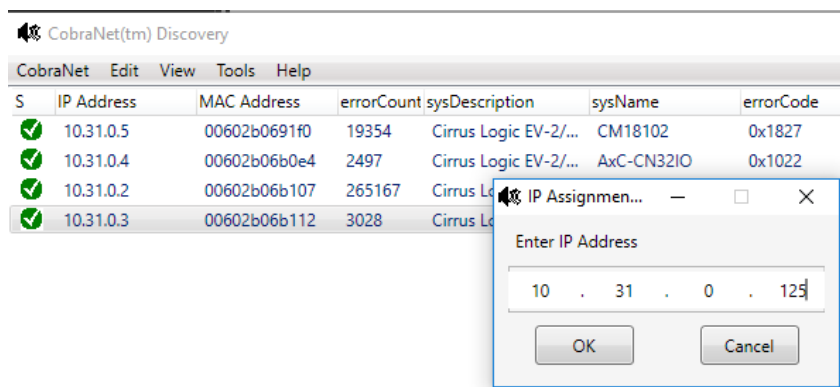
In CobraNet interface, you can have a dynamic IP address and a static IP address

- Dynamic IP address is not saved and disappear when device is power off and CobraNet Discovery software is close.
- Static IP address is saved (if “persistence” mode is enabled)

### 8.1 Force a dynamic IP address

First, CobraNet discovery auto-assigns IP address. After, you can change these IP addresses

1) Click “OK” New address is assigned

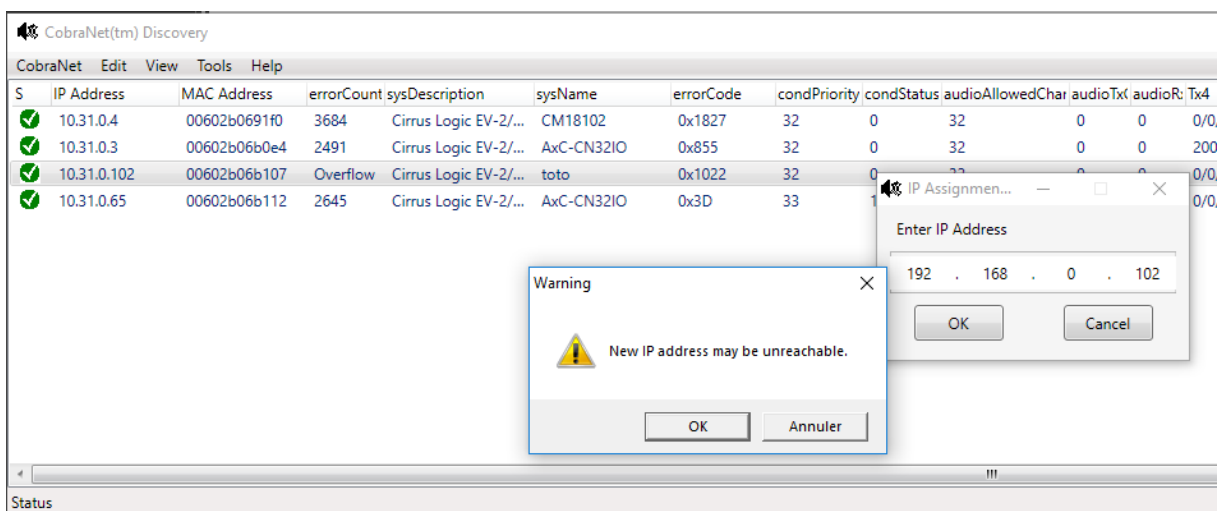


2) Put new IP address in the range defined in the “option” panel

3) Click “OK” New address is assigned

### Possible Warning

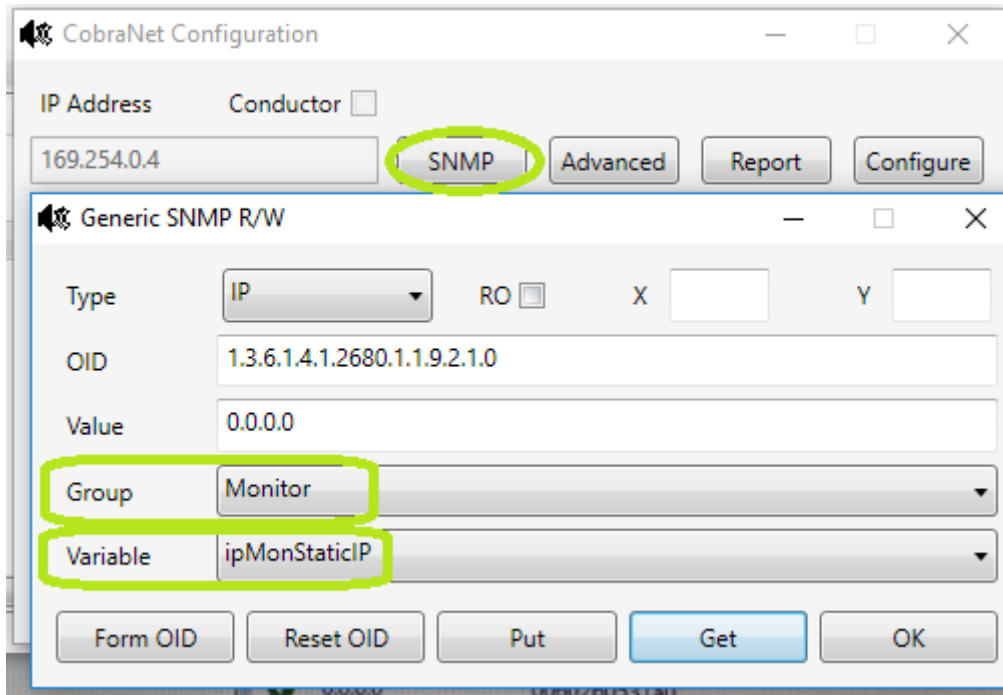
- Error “New Ip address may be unreachable can appear”
- IP address assigned doesn’t match with IP address range defined in the option panel



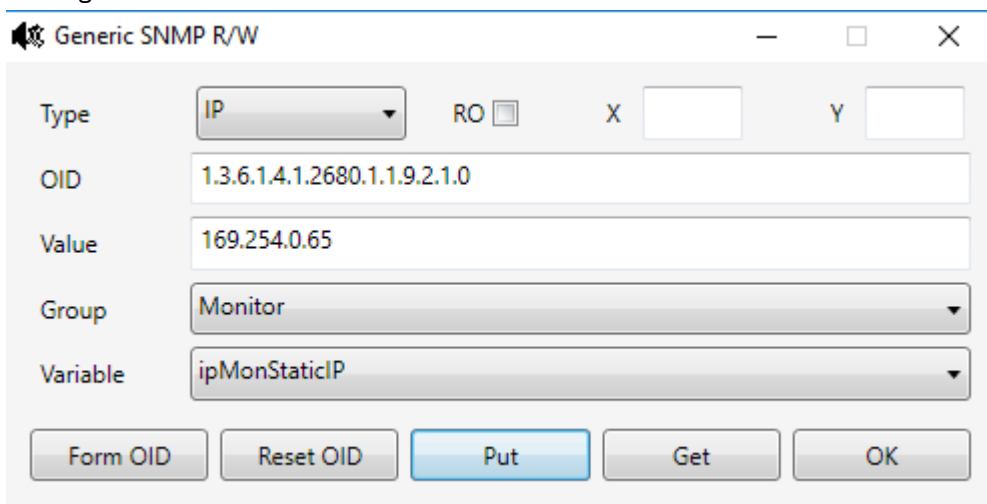
## 8.2 STATIC IP ADDRESS

To put static IP on CobraNet device, you must use SNMP module

- 1) Select device and double click on the device selected to get “CobraNet configuration” window (you can also make a right click)
- 2) Click on “SNMP” button



- 3) In the new dialog box, select “Monitor” in group menu and “ ipMonStaticIP” in the Variable Menu
- 4) Click on “get” button to get static IP address. If no static address was wrote, the default address is 0.0.0.0
- 5) Change the address value and click “PUT” button.



- 6) Click OK
- 7) IP address will change after reboot